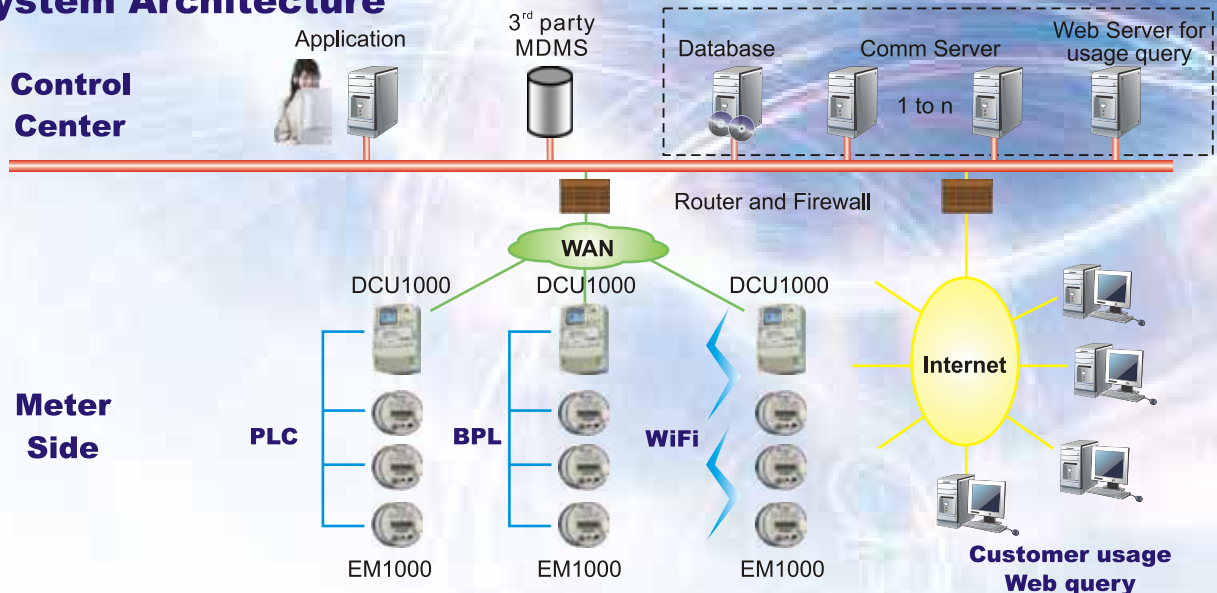


# Data Concentrator DCU1000 for Advanced Metering Infrastructure (AMI)

The AMI is consisted of DCU1000 concentrator and a series of smart meters. Its Plug&play and auto-routing features greatly simplify the system installation process. The communication interface to meters can be chosen to PLC, BPL (Broadband PLC) or WiFi, such flexibility will extend the AMI feasibility for different site situation. Not only the regular billing data but also the load profile, meter events, meter real time registers can be managed by the AMI. Up-link support GPRS/GSM and Ethernet which can leverage the existing WAN infrastructure to speed-up and cost down for the AMI deployment. The special design of RF Mesh between concentrators can reduce the WAN communication cost dramatically. Some advanced features of AMI including: outage report, time-synchronization, TOU setting, remote on/off and I-HD (In-home display) are (or will) also supported.

## AMI System Architecture



## Data Concentrator Unit DCU1000

### Features

- Up to 100 meters Management : meter auto registration, meter time synchronization, regular meter data polling, meter event logging, meter profile logging.
- Auto registration to center station.
- Support functions : regular reading, on-demand reading, outage report, TOU reading, demand reset, TOU setting.
- PLC 、 BPL 、 WiFi to meter communication ; Ethernet 、 GPRS to center communication.
- Friendly graphic LCD display and local IEC1107, RS-485 ports for on-site operation and setting.
- Long life battery for clock and chargeable battery for outage detection.



### Specification

<b>Meter communication</b>	PLC or BPL or WiFi, support ANSI C12.22 protocol
<b>Uplink communication</b>	Ethernet or GPRS/GSM
<b>On-site comm.</b>	RS-485×1, IrDA×1, for on-site operation
<b>Concentrator RF Mesh</b>	Can establish Mesh network to one concentrator then proceeding uplink communication
<b>Meter plug and play</b>	Meter plug & play, for registration
<b>Meter auto-routing</b>	Meters auto-routing
<b>Meters connection</b>	100 units
<b>Data saving</b>	Billing data, load profile, alarm/caution saving
<b>Data storage capacity</b>	90M byte NAND Flash, 100 unit meters which can be save billing data for 360 days, 2,000 alarm data, 920,000 load profile and can be expanded to 2G byte with SD card
<b>Concentrator unusual detection</b>	DI for illegal case open, power outage detection, Meter emergency alarm. Can set to report back immediately
<b>TOU download</b>	Support ANSI C12.18 , TOU data can be downloaded to meters



**Arch Meter Corporation**  
www.archmeter.com

<b>Meter register data reading</b>	Real time registers of meter can be read and uploaded
<b>Meter time correction</b>	To configured synchronize with time server for both concentrator & meter
<b>Power supply</b>	90-380 Vac $\pm$ 10%
<b>Temperature and Humidity</b>	0-50°C 、 0-95% RH non-condensing
<b>Tolerance</b>	Surge : 6 kV 、 ESD : contact 8 kV, air 15 kV 、 EFT : 4 kV
<b>Electromagnetic induction</b>	EN-61000
<b>Display</b>	320×200 65536 colors, wide temperature 3" LCD
<b>Output/Input</b>	2 DI : Relay (Source can be provided by concentrator ) , 2DO : relay withstand 240 Vac 130 mA
<b>RTC</b>	1200 mAh extra battery, can keep supply RTC power for 10 years when power outage
<b>Extra battery</b>	700 mAh chargeable battery, concentrator can work more then 10 minutes when in power outage
<b>Memory device</b>	DDR SD RAM : 128M byte 、 NAND Flash : 128M byte
<b>Expand port</b>	USB ×1 for on-site operation and data backup
<b>Size</b>	W 180 mm × H 2900 mm × L 95 mm

## Single Phase Multi-function Electricity Meter EM1000

### Features

- IEC 62053-22, ANSI C12.20, Class 0.5 revenue accuracy.
- Wide range of current measurement (from 0.0015 Ib to 6.67 Ib).
- Bi-directional energy measurement.
- Multi-tariff with TOU (up to 4 tariffs).
- Full power parameters measurement.
- Four quadrant measurement.
- Configurable block or rolling demand.
- Configurable crystal or power line time-base.



### Specification

<b>Power</b>	88~276Vac, 50/60 Hz
<b>Accuracy</b>	Class 0.5 (IEC 62053-22 or ANSI C12.20)
<b>Voltage Range</b>	Voltage 88~276 Vac
<b>Current Range</b>	Ib:30 A; I <sub>max</sub> :200 A
<b>Starting Current</b>	45 mA
<b>Temperature range</b>	Storage : -40°C~+85°C; Display full operation from -30 to +70°C
<b>Humidity range</b>	<=95%
<b>Primary time base</b>	Power line frequency (50/60 Hz), software configurable to crystal
<b>Secondary time base</b>	< 0.01%
<b>Meter base</b>	Form 2S
<b>Battery</b>	LiSOCl <sub>2</sub> , 950 mAh
<b>Communication port</b>	ANSI Type II optical port
<b>Communication option board</b>	RS-485, PLC, BPL, WiFi
<b>Application standard</b>	ANSI C12.1, ANSI C12.10, ANSI C12.18, ANSI C12.19, ANSI C12.20
<b>TOU</b>	4 tariff with season, day type, and time zone settings
<b>Programming software</b>	MeterGen for meter configuration, MeterComm for DAP communication, LoadProfiler for load curve report. 3 level security protection.
<b>Communication protocol</b>	ANSI C12.18, ANSI C12.19(with Modem option), ModBus(with RS-485 option)
<b>Surge voltage withstand</b>	ANSI C62.41, IEC 61000-4-5
<b>Calibration</b>	Automatic software calibration
<b>Dimension</b>	153.5mm(H) x 176.5mm(W) x 176.5mm(L)
<b>Net weight</b>	1.1 Kg



### Arch Meter Corporation

4F, No.3-2, Industry E. Rd., 9 Science-Park Hsinchu 300 Taiwan  
 TEL:+886-3-5631359 FAX:+886-3-5631663  
 Email:sales@archmeter.com